



Medical Simulation Service Wound Catalogue

Saviour Medical provides professional on-site moulage services to enhance your training event with realistic injury and illness simulation onto live actors or manikins. We are able to offer a one-stop shop and remove the stress and worry of accurate medical representation.

All products used are professional and therefore do not stain and have minimal allergy issues. Wounds are soft and lifelike made of encapsulated silicone, eliminating virtually all allergy or ethical issues compared to gelatine or latex for example.

All wounds can be made to actively bleed if required via hidden blood lines and pumps. Wounds are made in advance to minimise the time required for on-site make up to assist a smooth flow of your event.

We are able to assist you with the design and planning of your training event and wound selection. We brief casualties so that they match the simulated injury or illness with their symptom behaviour and acting to create total immersion and accurate moulage.

The Catalogue is designed to enable you to plan in advance your casualty requirements, and illustrates our wound portfolio. Wounds can be used in any combination to create multiple injury sites

At the rear of the catalogue is a body chart which can be annotated to assist description of your required casualties.

Should you wish to discuss your requirements please contact

Paul Savage OBE

on

mob: 07534 373722

or

email: paul@saviourmedical.com

**Note: All images are of the simulated pieces and are not real injuries.
Some images used with kind permission of Sangeet Prabhaker**



Bladed wounds



Wound B1:
1 inch blade triangular stab wound
with skin flap



Wound B2:
0.5 inch blade stab wound with
angled entry



Wound B3:
0.5 inch blade multiple stab wound



Wound B4:
0.5 inch blade stab wound



Wound B5:
3 inch deep dagger slash wound



Wound B6:
1.5 inch wound with skin flap



Wound B7:
2 inch curved laceration



Wound B8:
2 inch fine-blade deliberate self
harm wounds



Wound B9:
Simple 3 inch laceration



Wound B10:
Simple 6 inch laceration



Wound B11:
laceration with flap



Wound B12:
multiple small blade stab wounds



Wound B13:
multiple small blade stab wounds



Wound B14:
Single medium stab wound



Wound B15:
Double stab with medium blade



Wound B16:
Angled entry with medium blade



Wound B17:
Long thin curved laceration



Wound B18:
Machete wound to hand



Wound B19:
Machete wound to limb



Wound B20:
Chelsea Smile style wound - right



Wound B21:
Chelsea Smile style wound - left



Wound B22:
Frenzied knife attack



Wound B23:
3 inch and 5 inch slash wound



Wound B24:
2 inch slash wound with fat



Wound B25:
Multipurpose small curved wound
#1



Wound B26:
Multipurpose small curved wound
#2



Wound B27:
Shallow laceration from axe blade



Wound B28:
Deep laceration from axe blade



Wound B29:
3 inch curved laceration with flap



Wound B30:
Deep tissue incision with fat



Wound B31:
Single Stab



Wound B32:
Double Stab



Wound B33:
Triple Stab



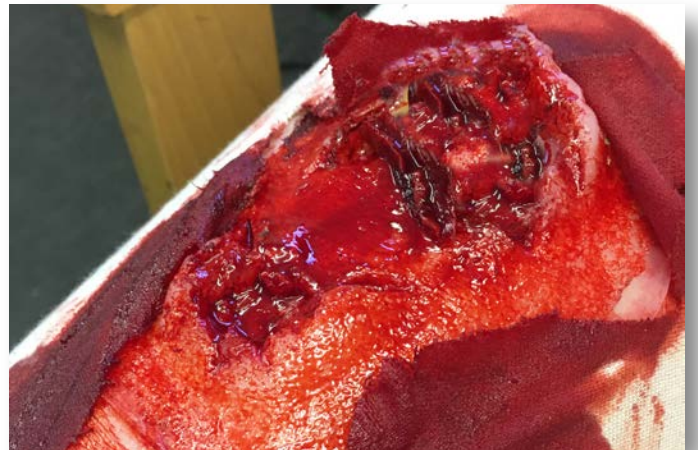
Example Sim:

Stab Wounds B31,32,33 and Fake Knife set used together to create a realistic stabbing scenario

Traumatic Wounds



Wound T1:
Generic Blunt Trauma



Wound T2:
large 5 inch generic tissue wound



Wound T3:
3 inch generic messy gash



Wound T4:
4 inch flesh tear / animal bite



Wound T5:
3 inch generic tissue wound



Wound T6:
2 inch generic tissue wound



Wound T7:
5 inch de-gloved style wound



Wound T8:
Cheek flap wound



Wound T9:
Human bite wound



Wound T10:
Animal bite wound



Wound T11:
Open throat with visible larynx



Wound T12:
6 inch jagged slit throat wound



Wound T13:
6 inch large tissue wound to throat



Wound T14:
1 inch tissue wound with skin flap



Wound T15:
6 inch forehead wound



Wound T16:
Generic traumatic wound



Wound T17:
2 inch cheek wound



Wound T18:
4 inch cheek wound



Wound T19:
Palm wound



Wound T20:
12 inch large trauma wound



Wound T21:
6 inch medium trauma wound



Wound T22:
2 inch ankle flap wound



Wound T23:
Massive trauma wound / shark
bite / prop strike



Wound T24:
Large chainsaw style wound limb



Wound T25:
Deep tissue laceration



Wound T26:
3 inch clean traumatic wound



Wound T27:
3 inch jagged traumatic wound



Wound T28:
Eviscerated Intestines



Wound T29:
Hand De-gloving



Wound X2
Skin flaps

Fractures



Wound F1:
Open ankle fracture with
bone fragment



Wound F2:
3 inch open fracture with bone
fragments



Wound F3:
6 inch open tibial fracture



Wound F4:
Closed fracture



Wound F5:
Open femur fracture 1



Wound F6:
Open femur fracture 2



Wound F7:
Fractured nose



Wound F8:
Fractured orbit



Wound F9:
Small Closed Fracture



Wound F10:
Small Open Fracture

Raised JVP



Wound JVP1:
Uni-lateral raised JVP piece - can be applied either side
Actively bleeds with addition of blood line

Gun shot and blast wounds



Wound G1:
7.62 triple entry wound



Wound G2:
7.62 triple exit wound



Wound G3:
MP5 exit wound at 7m



Wound G4:
7.56 entry wound at 7m



Wound G5:
Glock 19, 9mm round, entry at 7m



Wound G6:
Glock 19, 9mm round, exit at 7m



Wound G7:
.44 Taurus Magnum, entry at 7m



Wound G8:
.44 Taurus Magnum, exit at 7m



Wound G9:
.44 Taurus Magnum, entry point
blank



Wound G10:
.44 Taurus Magnum, exit point
blank



Wound G11:
AR15 .223 round, entry at 5m



Wound G12:
AR15 .223 round, exit at 5m



Wound G13:
Walther PPK 7.65 angled entry



Wound G14:
Walther PPK 7.65 angled exit



Wound G15:
Shallow small calibre entry wound



Wound G16:
Deeper small calibre entry wound



Wound G17:
Triple entry or exit / through and through wound



Wound G18:
Raised exit wound



Wound G19:
Clean small calibre entry wound



Wound G20:
Clean small calibre exit wound



Wound G21:
Magnum 45 entry wound



Wound G22:
Double tap entry wound



Wound G23:
Generic exit wound - small



Wound G24:
Generic exit wound large



Wound G25:
Shotgun entry 1



Wound G26:
Shotgun entry 2



Wound G27:
Limb shrapnel injuries



Wound G28:
Small individual shrapnel injury



Wound G29:
Foot entry wound



Wound G30:
Foot exit wound

Burns



Partial thickness



Partial thickness



Full thickness



Full thickness

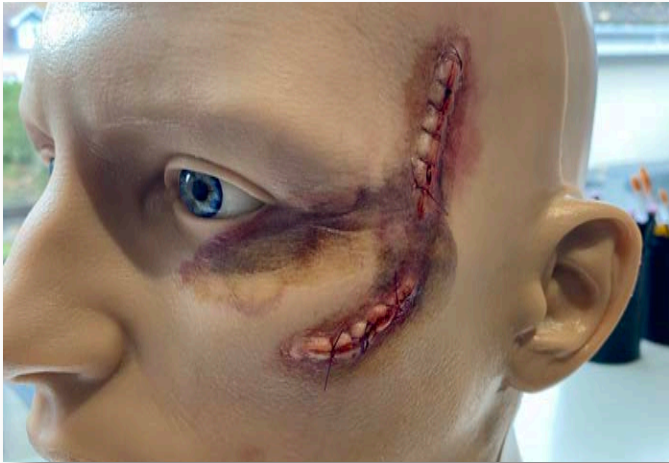


Flashover



Chemical / Scald / CBRN

Inhospital Simulation



Wound H1
Stitched Wounds



Wound H2:
1 inch necrotic wound



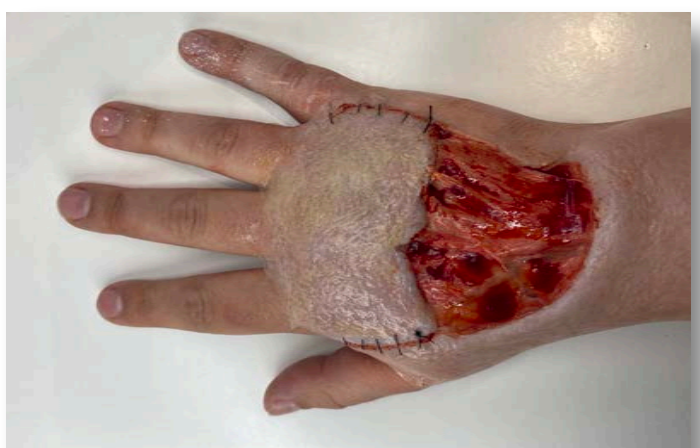
Wound H3
Large Ulcer



Wound H4
Skin Graft



Wound H5
Larger Stitched Wounds



Wound H6
Partial tissue repair to wound T29



Wound H7
Infected Stitched Wound



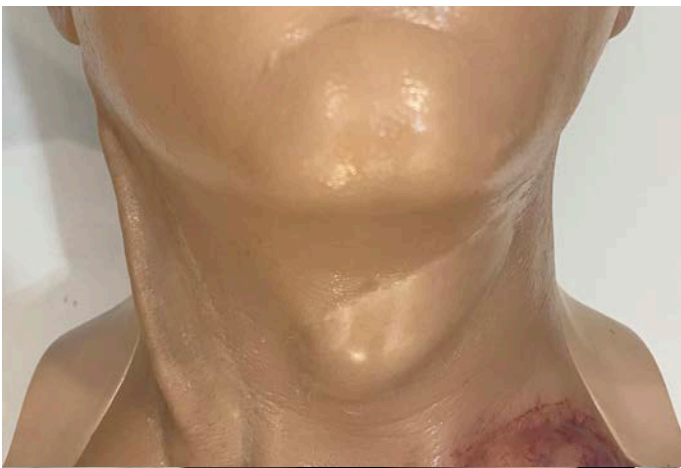
Wound H8
3 inch Pressure Sore



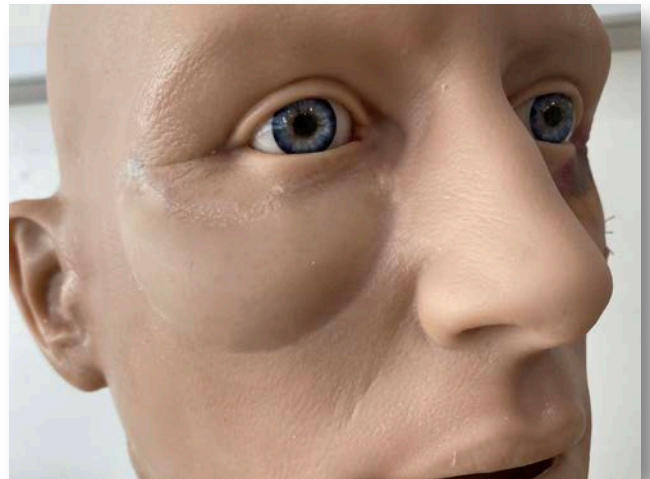
Wound H9
Post operation healed scar



Wound H10
Operation Sutured or Stapled Wound



Wound H11
Goitre



Wound H11
Eye bag



Wound H12
Burst Infected Surgical Wound



Wound H13
Stoma



Wound H14
Stage 2 Diabetic Ulcer



Wound H15
Stage 3 Diabetic Ulcer



Wound H16
Stage 4 Diabetic Ulcer



Wound H17
Implanted Pacemaker

Bruising and other skin effects



Track marks



Psoriasis



Fresh bruising

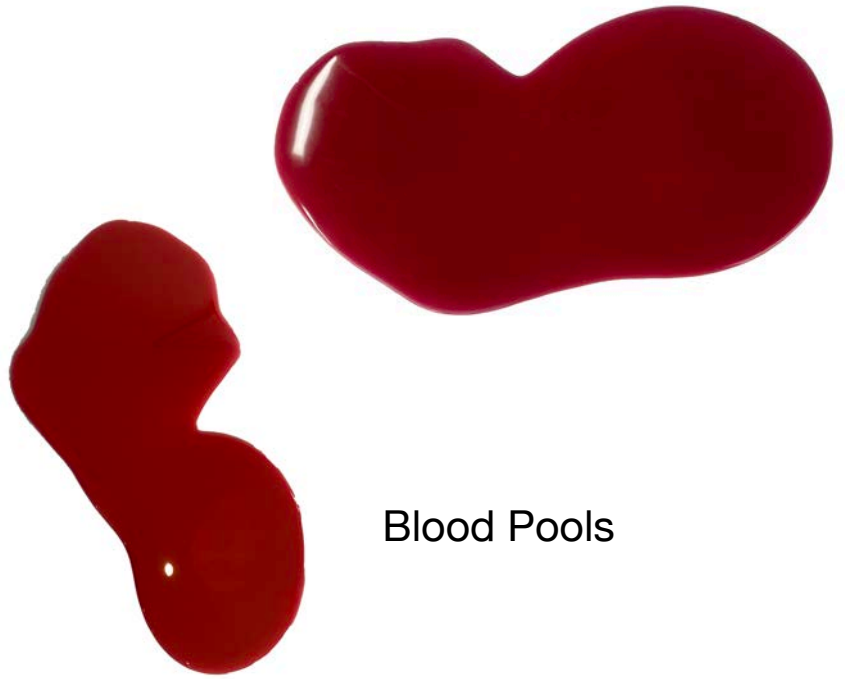


Aged bruising



Sepsis

Floor-safe Fluid Pools



Blood Pools



Vomit Pools

Safe Props available



Silicone Safe Glass



Safe Metal Bars for Impaling

Safe Weapon Props available

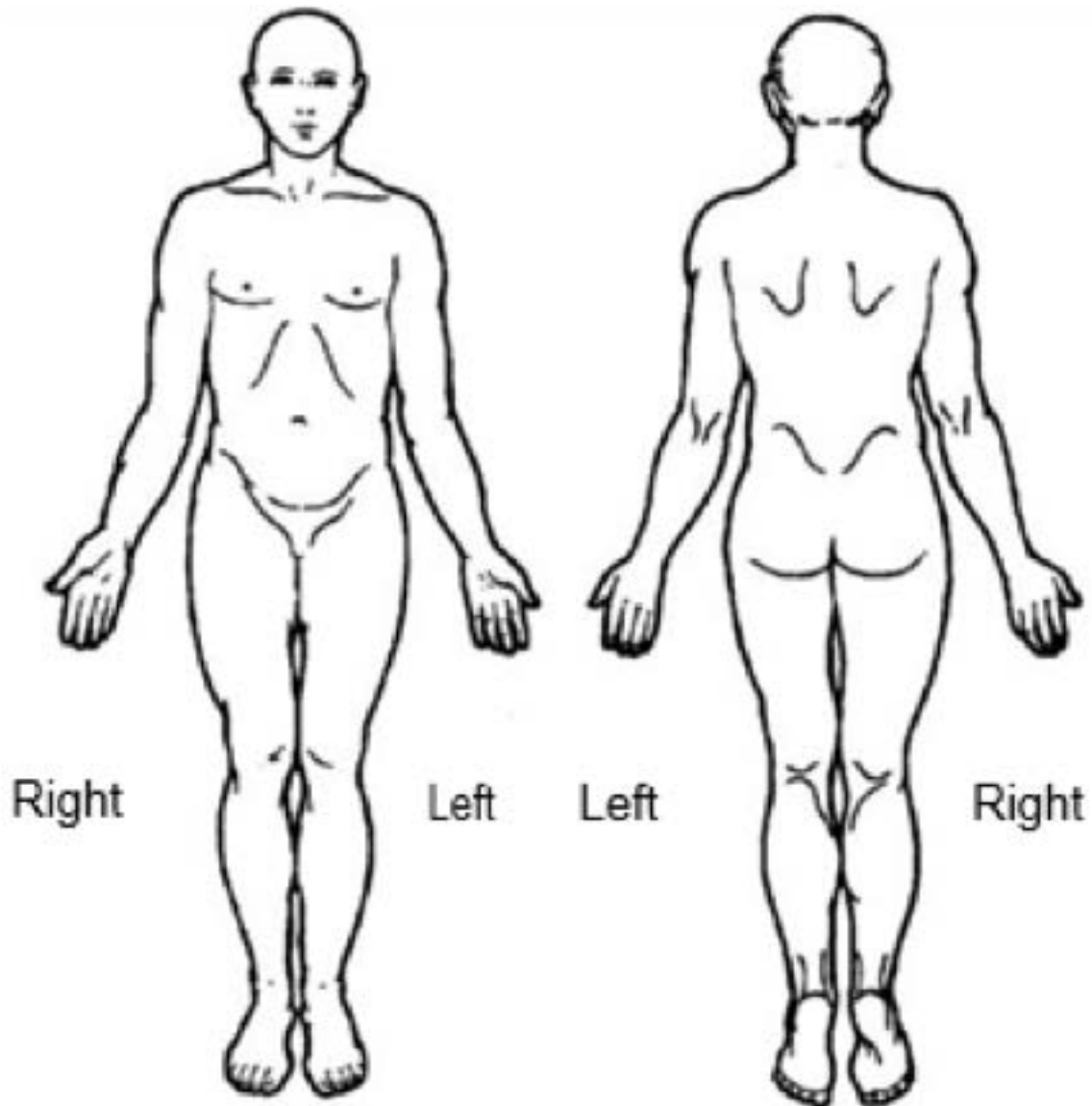


Safe Knife Prop including in-situ blade



Casualty planning sheet:

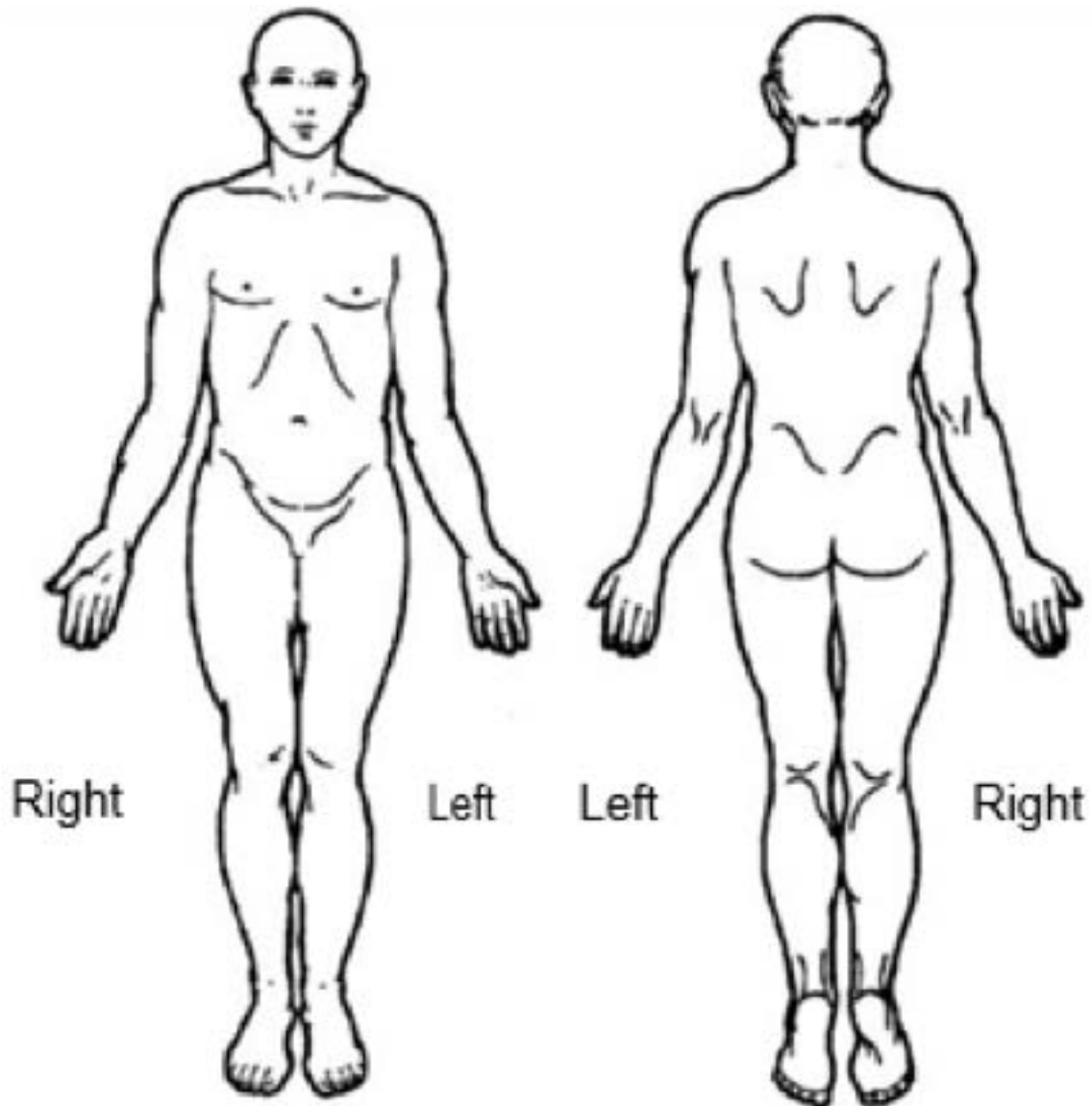
Casualty number:



Additional Notes:

Casualty planning sheet:

Casualty number:



Additional Notes:





Wound T6:
4 inch generic tissue wound



Wound B20:
3 inch y shaped blade wound