

Flat Mould Sales Catalogue

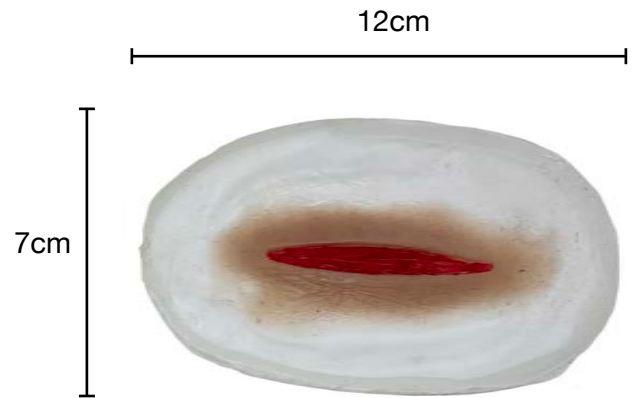
V6.0 Jan 2023



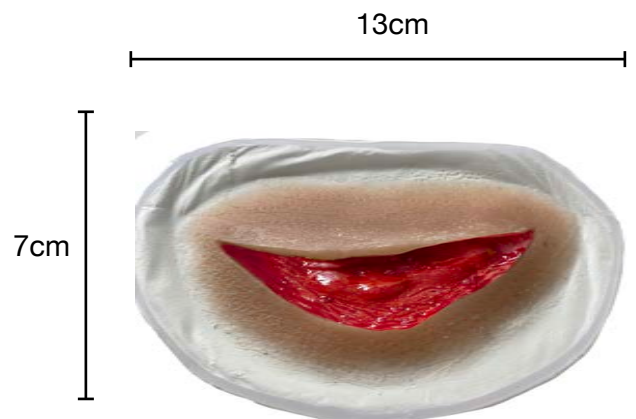
Bladed wounds



Wound SMBL1:
Simple 3 inch laceration
RRP: £29.00

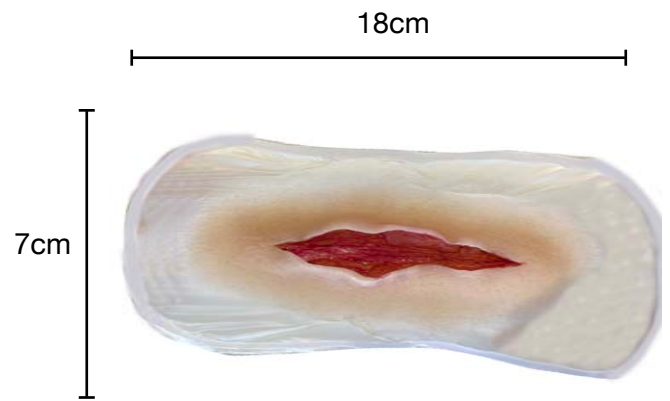


Wound SMBL2:
3 inch curved laceration with large flap
RRP: £49.00

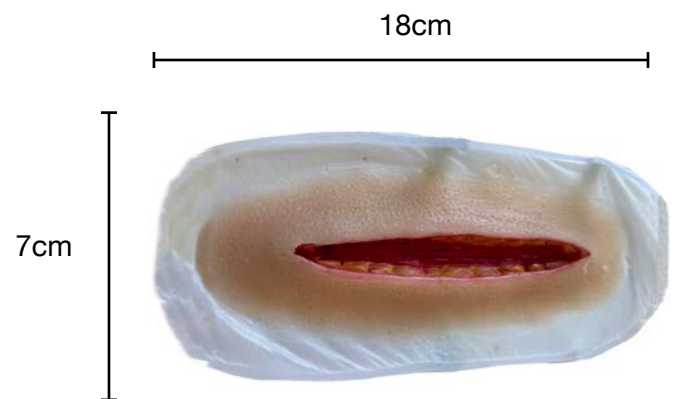




Wound SMBL3:
Deep Tissue Laceration
RRP: £49.00

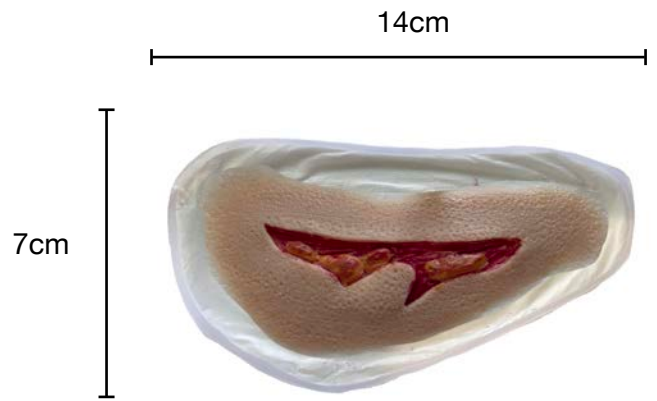


Wound SMBL4:
Deep Tissue Incision with fat
RRP: £49.00





Wound SMBL5:
3 inch clean traumatic wound
RRP: £29.00

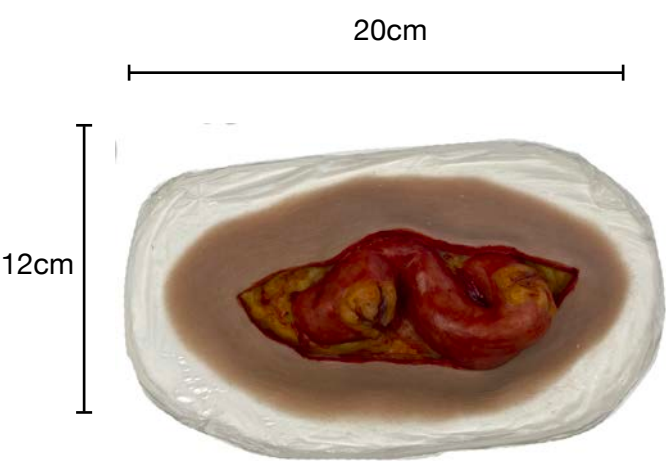


Wound SMBL6:
3 inch jagged traumatic wound
RRP: £29.00

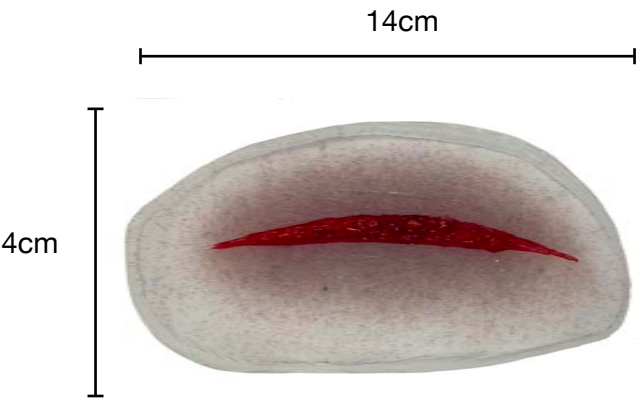


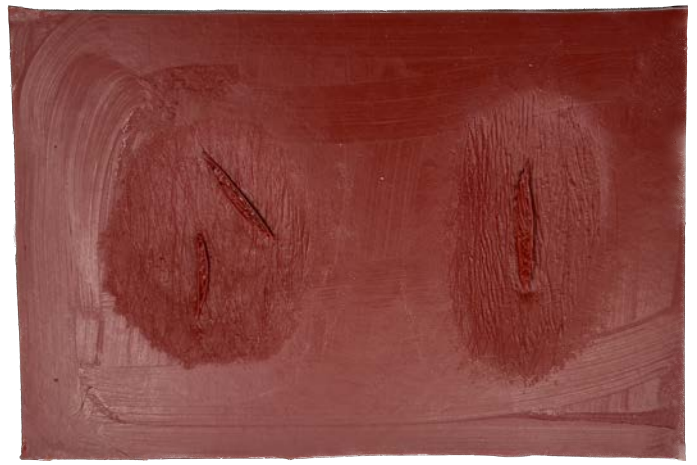


Wound SML7:
Eviscerated Abdomen
RRP: £99.00

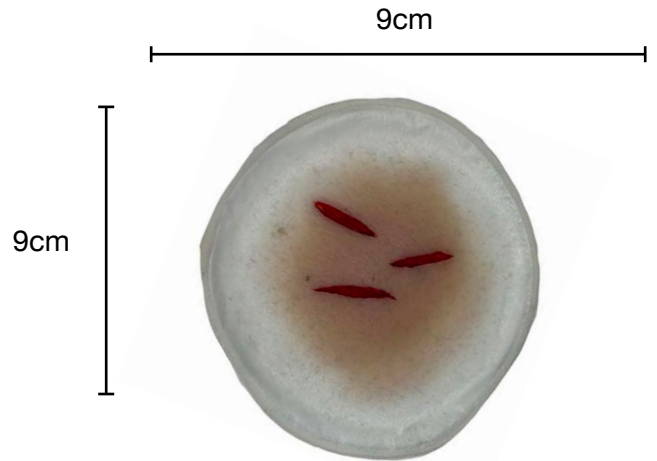
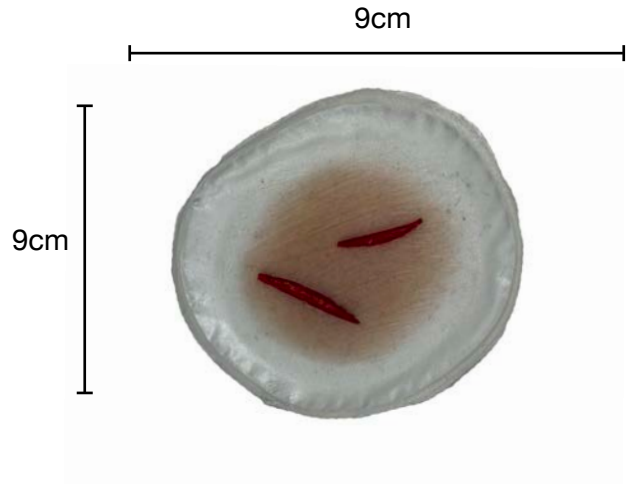
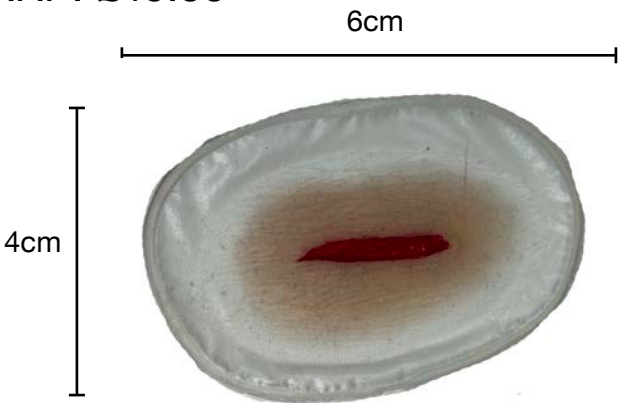


Wound SML8:
4 inch curved incision
RRP: £29.00





Wound SMBL9:
Single and Double Stab wound
RRP: £49.00



Wound SMBL10:
Triple stab wound
RRP: £29.00



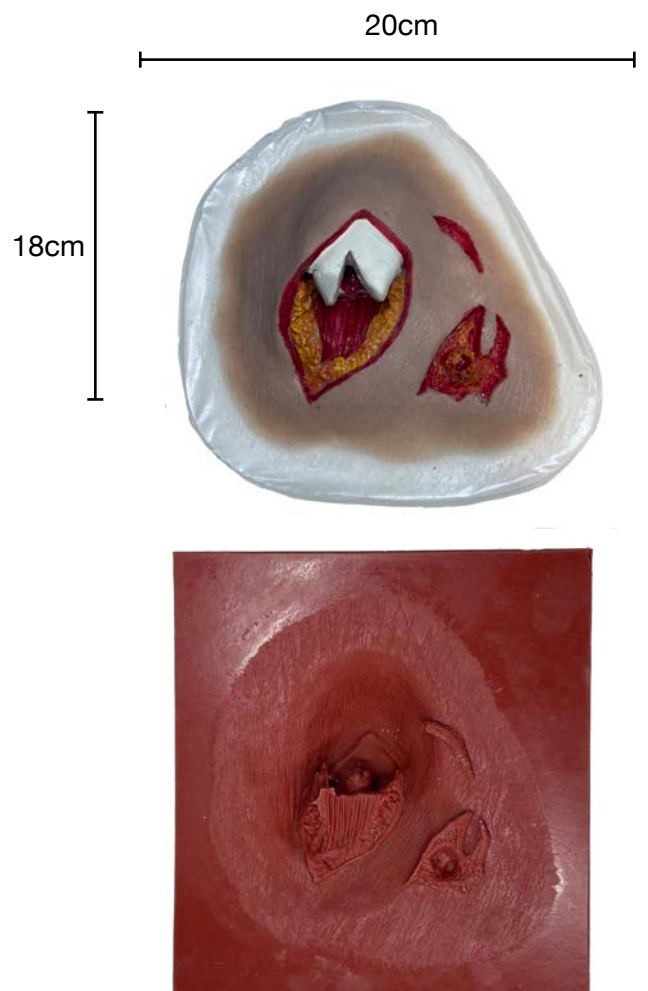
Fractures



Wound SMF1:
Broken Nose
RRP: £29.00

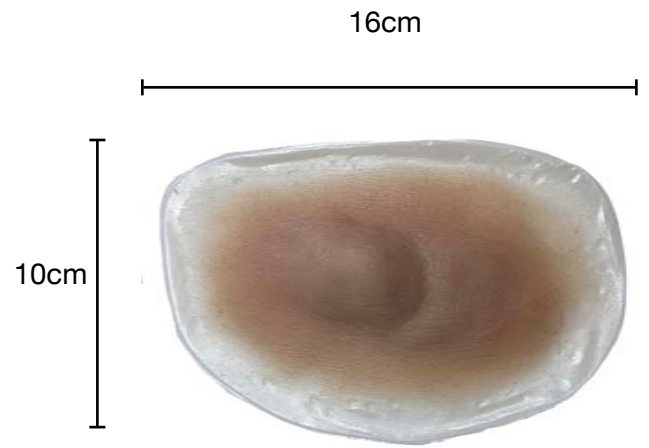


Wound SMF2:
Open femur fracture
RRP: £99.00





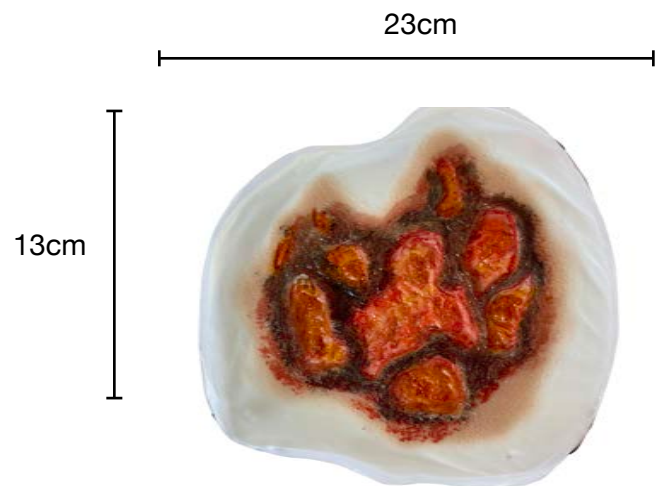
Wound SMF3:
Closed fracture
RRP: £49.00

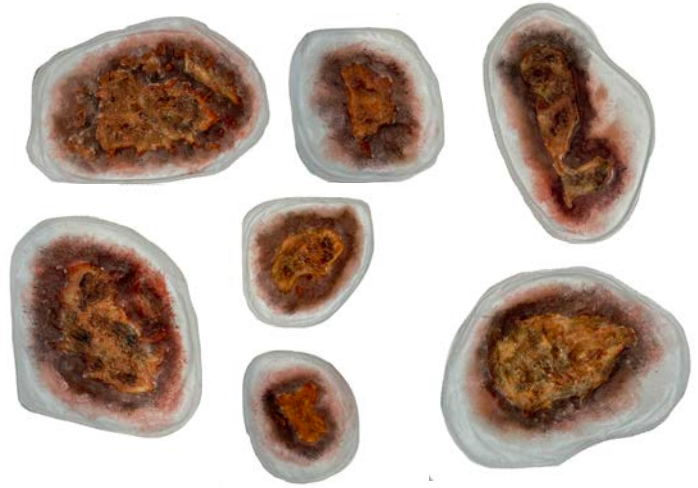


Thermal Burns



Wound SMBU1:
Full thickness burn / blast wound
RRP: £49.00





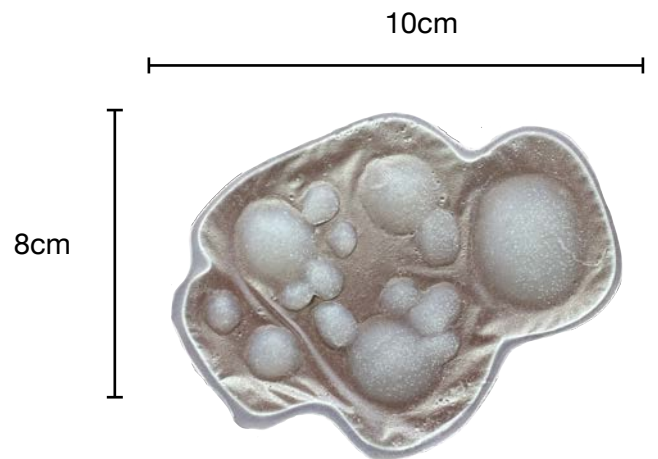
Wound SMBU2:

Huge mould of 7 Full thickness burns / blast wounds to create large scale effects

RRP: £99.00



Burns; Blisters - Chemical / Scald / CBRN



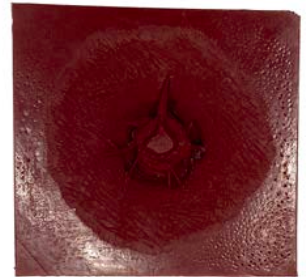
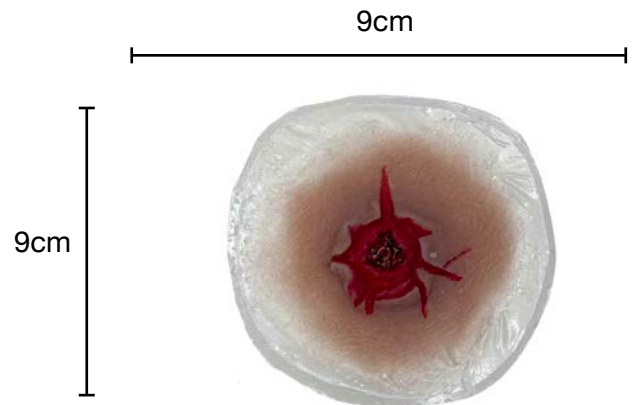
Wound SMBU3:
Multipurpose Blister wound
RRP: £29.00



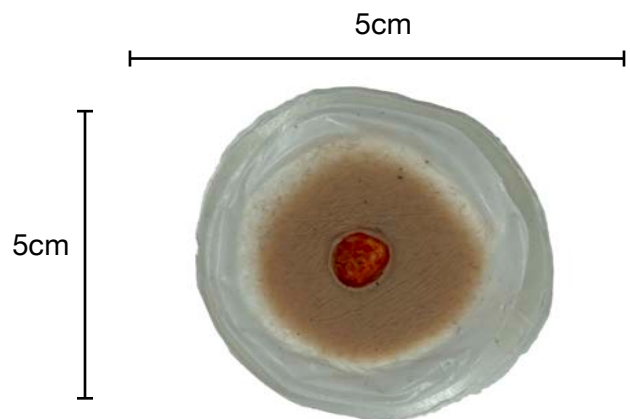
Gun shot wounds



Wound SMGSW1:
Raised exit wound
RRP: £29.00



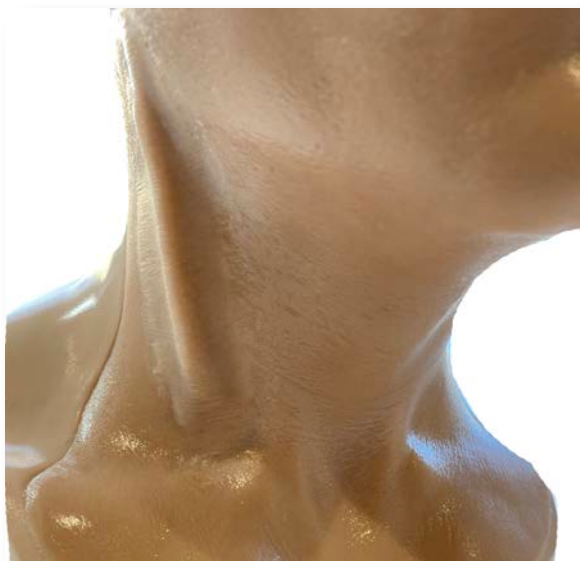
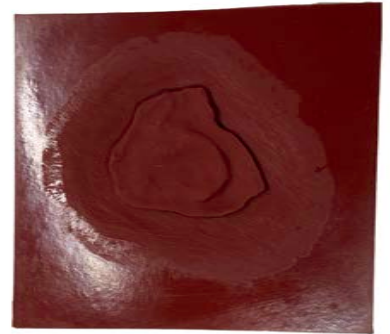
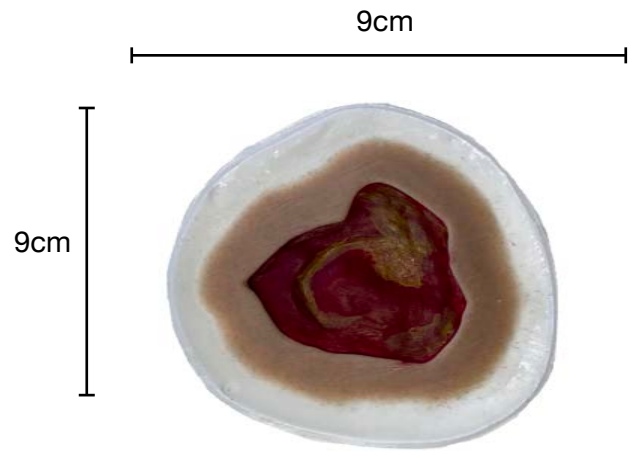
Wound SMGSW2:
9mm clean entry wound
RRP: £29.00



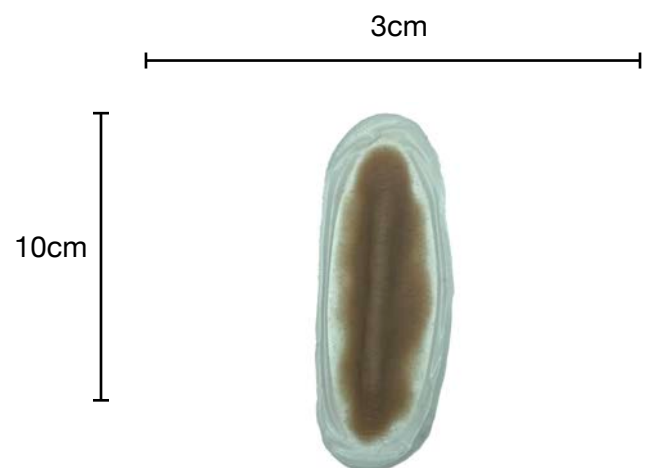
Medical Wounds

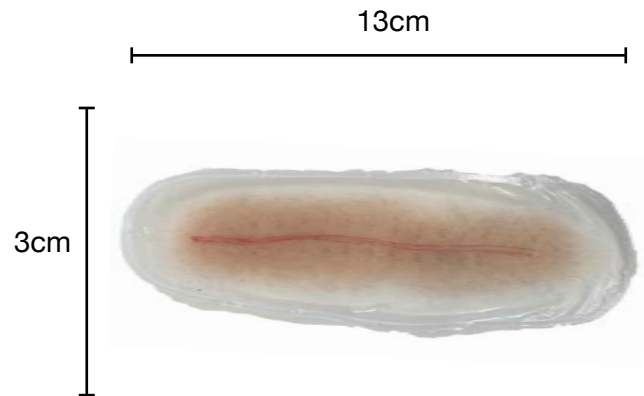


Wound SMMED1:
3 inch Pressure Sore
RRP: £29.00

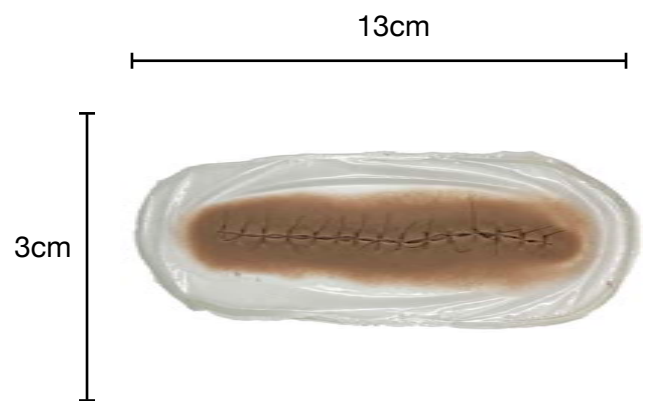


Wound SMMED2:
Raised JVP unilateral
RRP: £29.00





Wound SMMED3:
Post Operation Healed Scar
RRP: £29.00

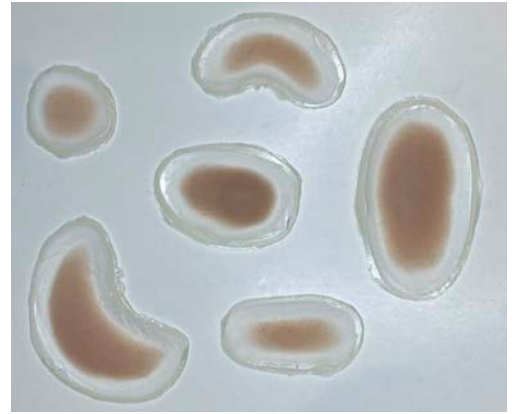


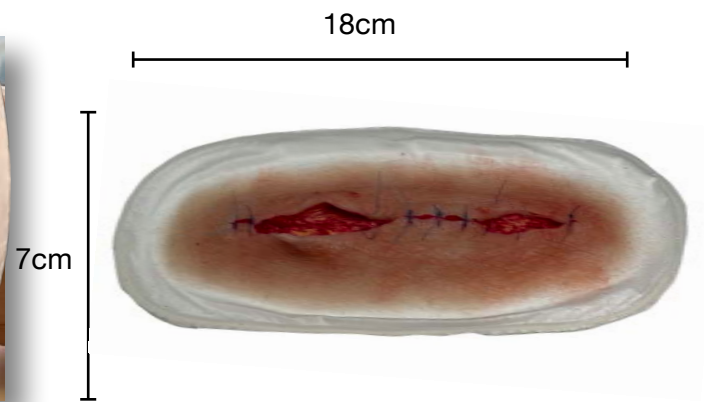
Wound SMMED4:
Operation Sutured / stapled wound
With skin texture (human application)
Without skin texture (manikin application)

RRP: £29.00

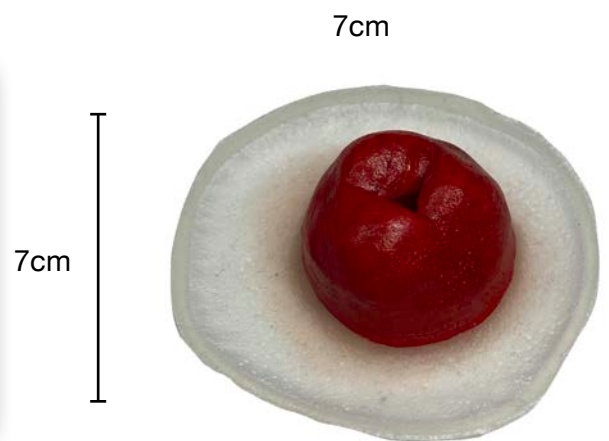


Wound SMMED5:
6 generic Swellings
Small Closed Fractures, Blisters,
Joint & Tissue Swellings
RRP: £40.00





Wound SMMED6:
Post Operation Burst Wound
RRP: £49.00



Wound SMMED7:
Stoma

RRP: £29.00



Wound SMMED8:

Diabetic Ulceration

3 wounds supplied as a set designed to be a progression of each other covering stage 2 to 4 of ulceration

RRP: £49.00



Stage 2



Stage 3



Stage 4



Fake Impaled Metal Bar

Soft, flexible, quality set of 4 fake metal bars that looks exactly like the real thing but can be placed safely in any wound to create stunning effects.



Contents:

- ◆ 2 textured rebars
- ◆ 2 rusty metal rods

*images for illustration purposes

£20.00

Silicone Safe Fake Glass

Soft, flexible quality silicone glass that looks exactly like broken glass but can be placed safely in any wound to create stunning effects.



Contents:

- ◆ 50g Bag of Reusable Silicone Glass

*images for illustration purposes

£ 15.00

Safe Fake Knife set

Soft fake handle, accurately coloured akin to a film prop. Supplied with a fake blade and also an impaled blade to be used with any appropriate simwound.



Contents:

- ◆ Painted handle
- ◆ Painted full safe blade
- ◆ Painted impaled blade

*images for illustration purposes

£20.00



Here combined with SML9 to create a perfect Stabbed effect.

Amputated Finger set: SW-AF2

Soft, flexible quality set of 2 fake amputated fingers that look exactly like the real thing to create stunning effects.



*images for illustration purposes

Contents :

- ◆ 1 long finger
- ◆ 1 finger tip

£20.00



Simology™
Critical Moulage Kits

Silicone Re-usable Blood Pools

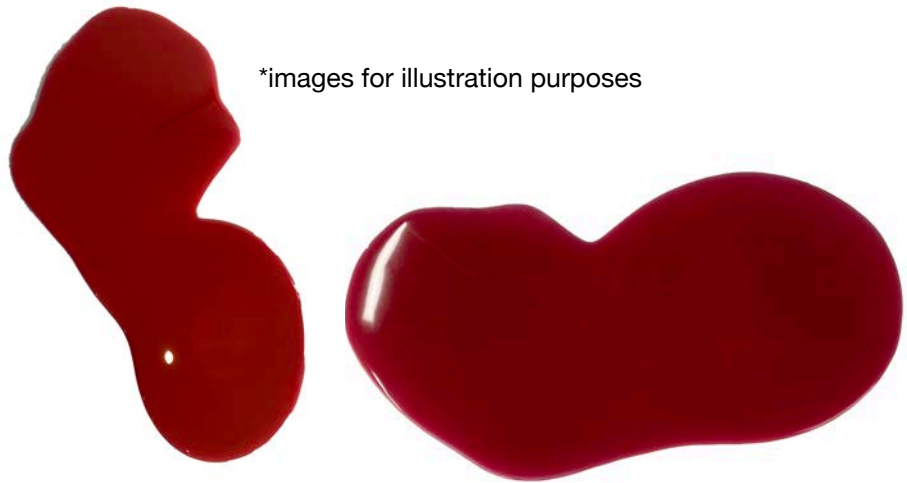
Soft, flexible quality silicone blood pool that looks exactly like the real thing but can be placed safely on any surface to create stunning effects, and simply peeled off when finished, stored and re-used.

Small (20cmx10cm approx) and Large (30cm x 15cm approx).



- ◆ Reusable Blood Pool Small
£ 15.00
- ◆ Reusable Blood Pool Large
£ 25.00

*images for illustration purposes



Silicone Re-usable Fake Vomit

Soft, flexible quality silicone vomit that looks exactly like the real thing but can be placed safely on any surface to create stunning effects, and simply peeled off when finished, stored and re-used. Variety of shades available.

Small (20cmx10cm approx) and Large (30cm x 15cm approx).



- ◆ Reusable Silicone Vomit Small
£ 15.00
- ◆ Reusable Silicone Vomit Large
£ 25.00

*images for illustration purposes

Silicone Re-usable Suture Pad

Soft, flexible quality silicone suture pad comprising 3 mesh reinforced layers of muscle, fat and skin. Can be re-sutured multiple occasions. Perfect tool for suture practice. Left blank for you to create the wounds you need to suture.

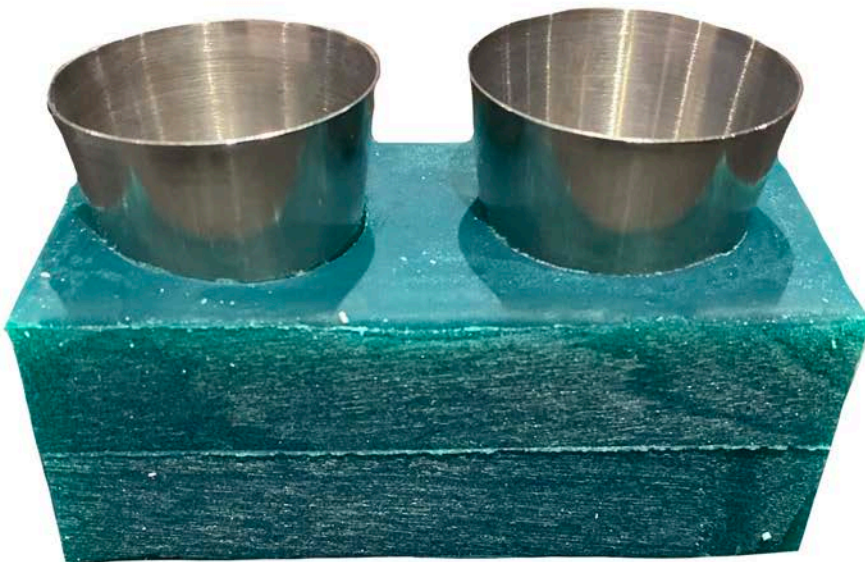


◆ Reusable Suture Pad
£ 25.00



Glue and Alcohol Pot Stand

Silicone cast dual shot glass holder supplied with re-usable stainless still shot glasses for safe non-spill usage of any fluids.



£15.00

**PLEASE NOTE:
ALL PRICES EXCLUDE VAT AND CARRIAGE**