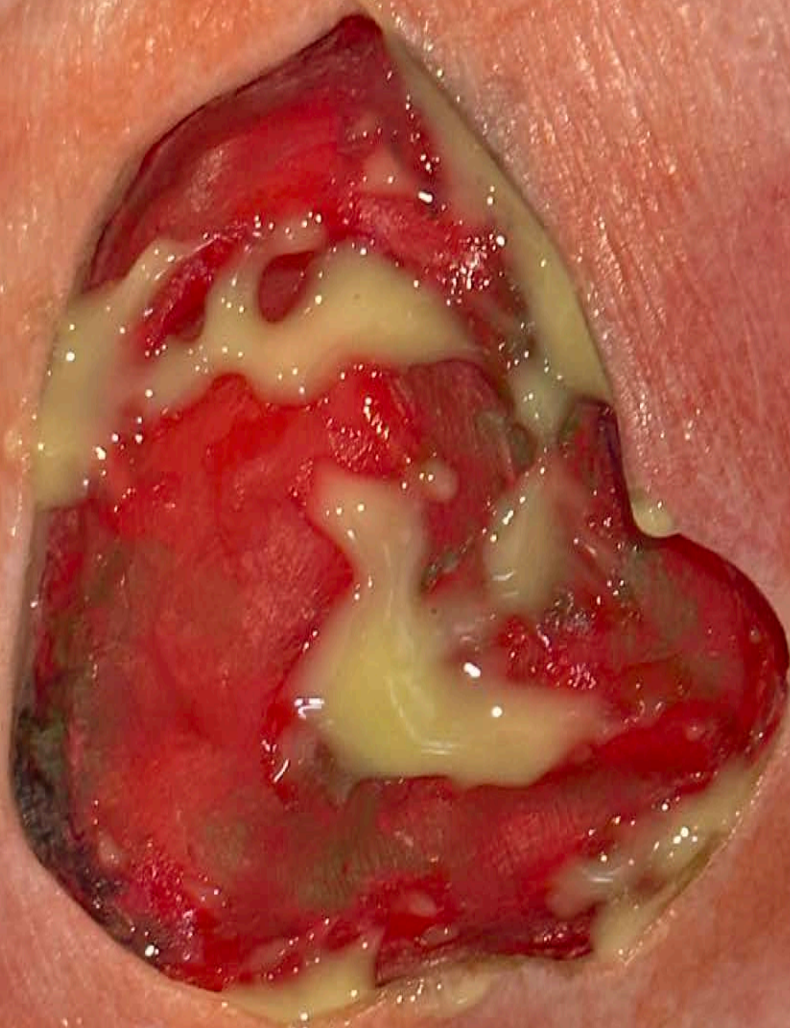


# Flat Mould Sales Catalogue

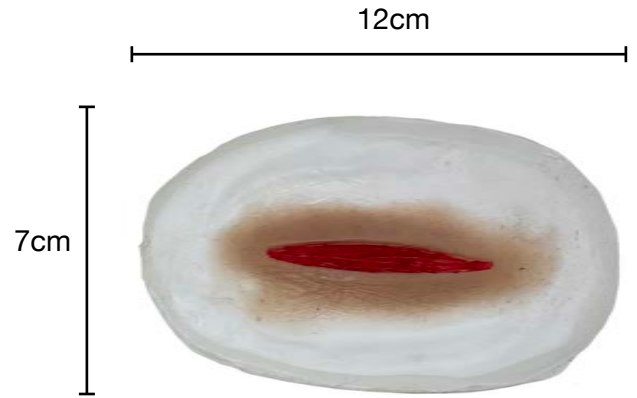
V7.0 Jan 2024



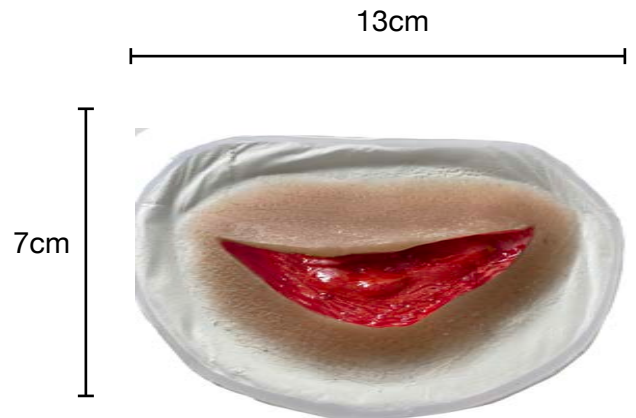
# Bladed wounds



Wound SMBL1:  
Simple 3 inch laceration  
RRP: £35.00

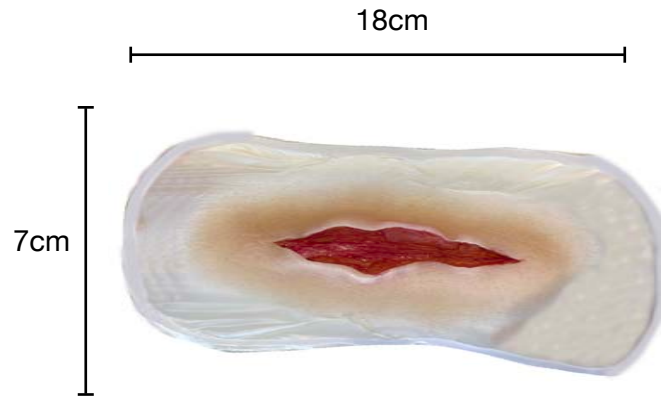


Wound SMBL2:  
3 inch curved laceration with large flap  
RRP: £35.00

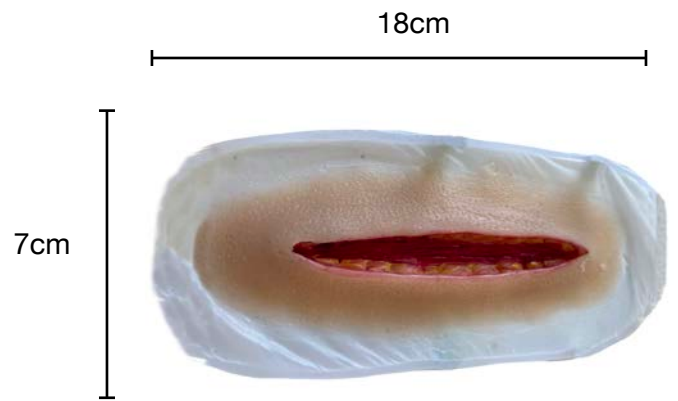




Wound SMBL3:  
Deep Tissue Laceration  
RRP: £50.00

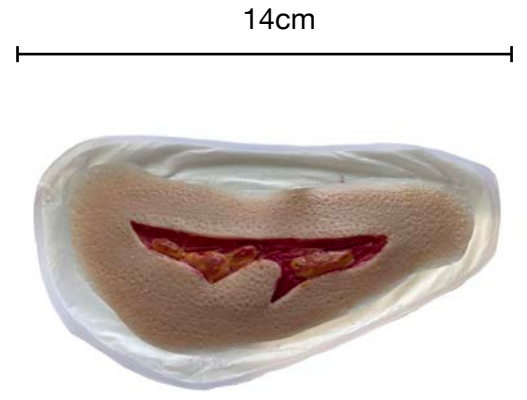


Wound SMBL4:  
Deep Tissue Incision with fat  
RRP: £50.00





Wound SMBL5:  
3 inch clean traumatic wound  
RRP: £35.00

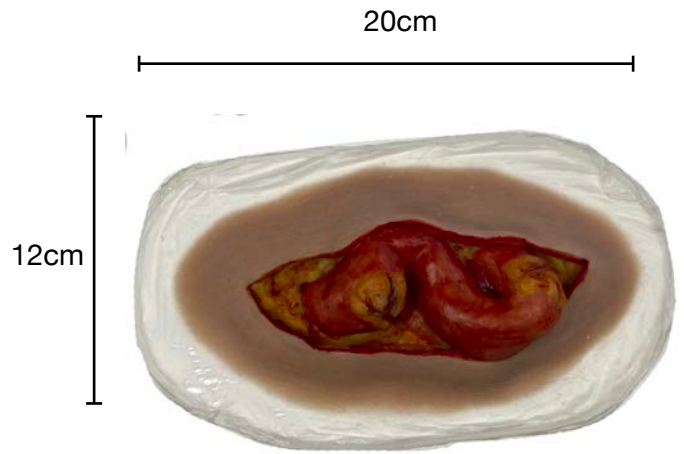


Wound SMBL6:  
3 inch jagged traumatic wound  
RRP: £35.00

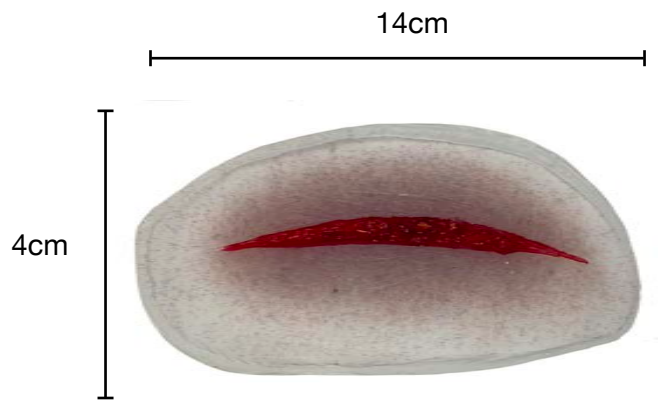


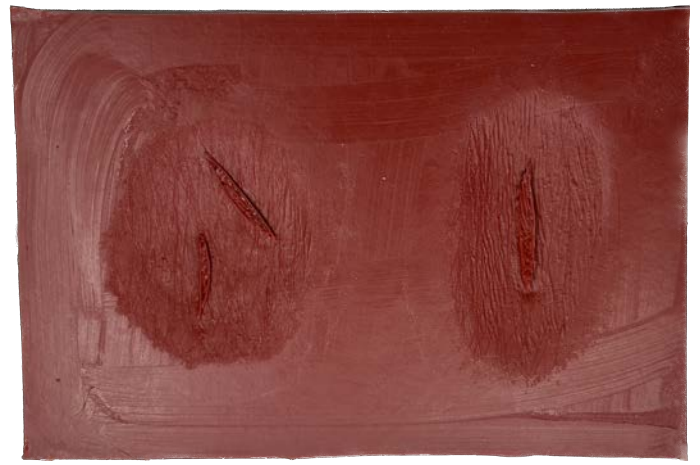


Wound SML7:  
Eviscerated Abdomen  
RRP: £99.00

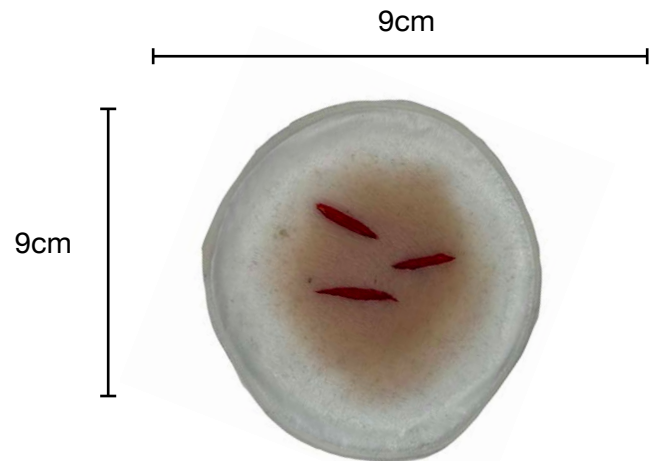
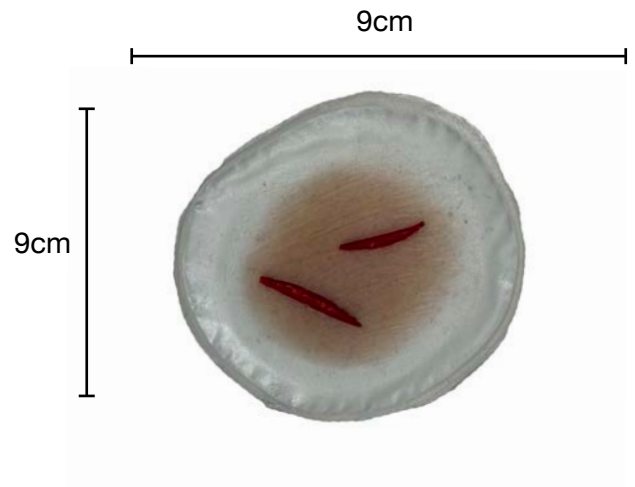
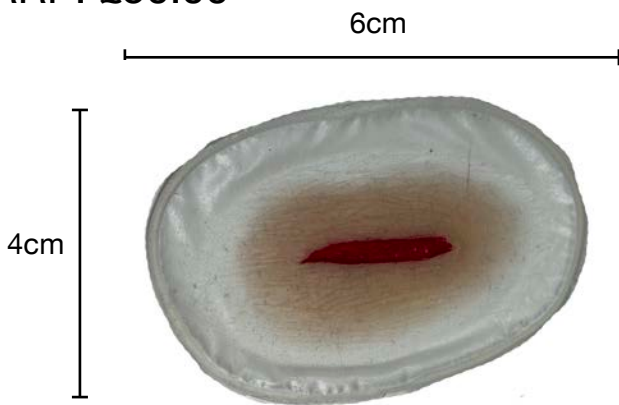


Wound SML8:  
4 inch curved incision  
RRP: £35.00





Wound SMBL9:  
Single and Double Stab wound  
RRP: £50.00



Wound SMBL10:  
Triple stab wound  
RRP: £35.00



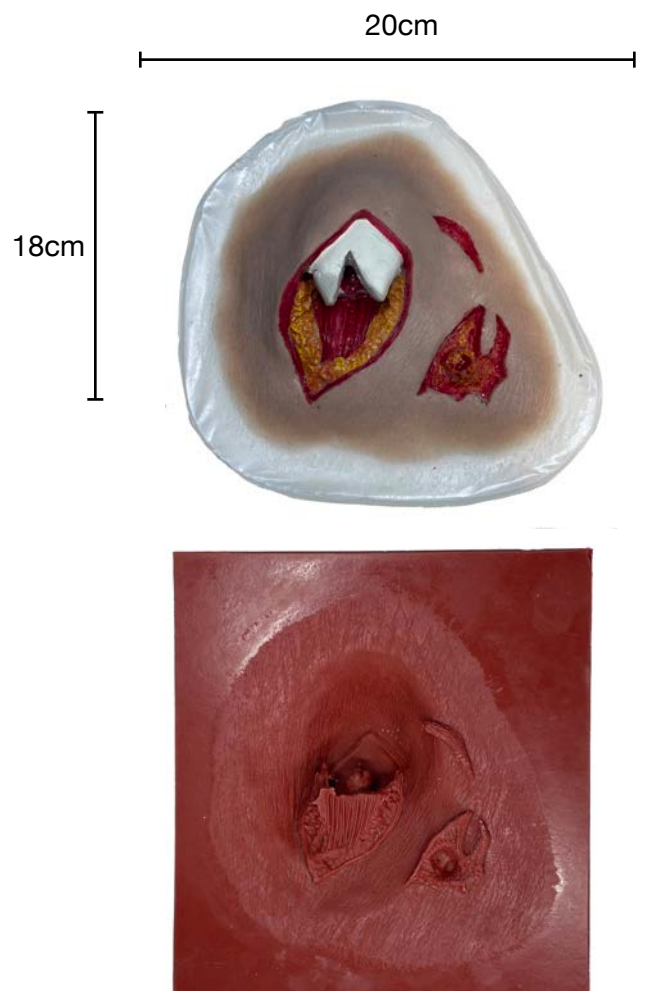
# Fractures



Wound SMF1:  
Broken Nose  
RRP: £20.00

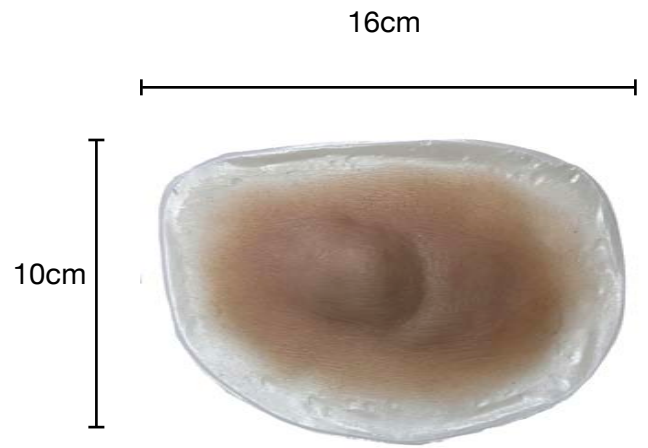


Wound SMF2:  
Open femur fracture  
RRP: £99.00

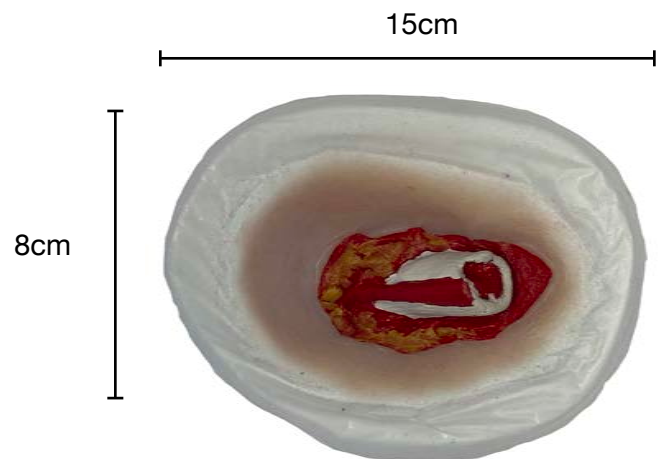




Wound SMF3:  
Closed fracture  
RRP: £50.00



Wound SMF4:  
Small Open Fracture  
RRP: £50.00

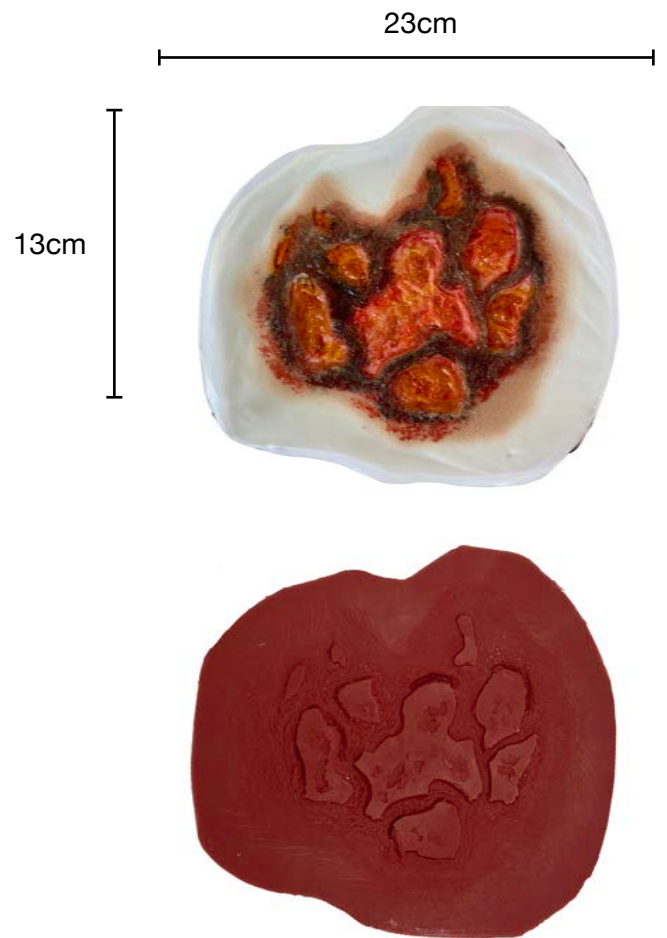


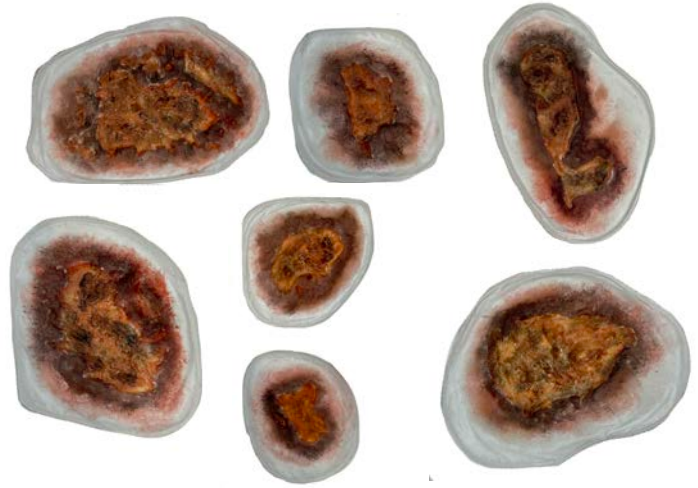


# Thermal Burns



Wound SMBU1:  
Full thickness burn / blast wound  
RRP: £35.00





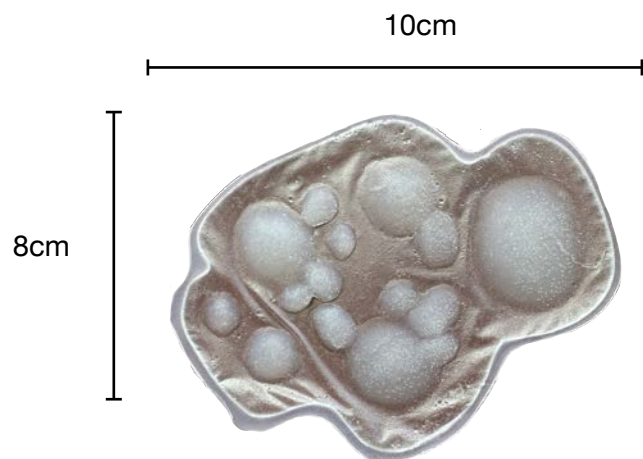
Wound SMBU2:

Huge mould of 7 Full thickness burns / blast wounds to create large scale effects

RRP: £99.00



# Burns; Blisters - Chemical / Scald / CBRN



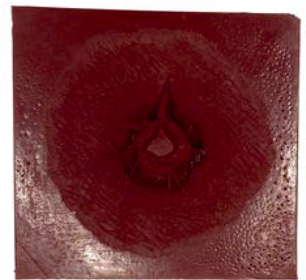
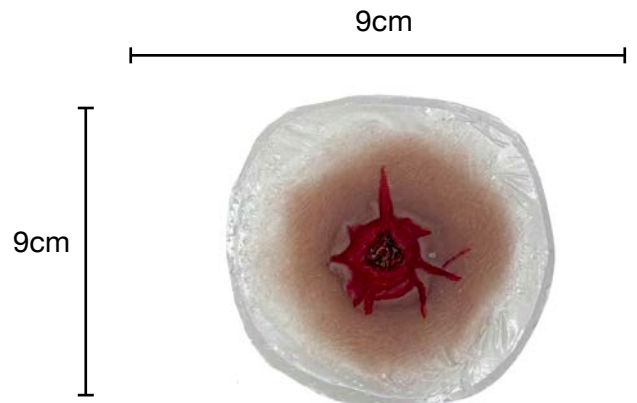
Wound SMBU3:  
Multipurpose Blister wound  
RRP: £35.00



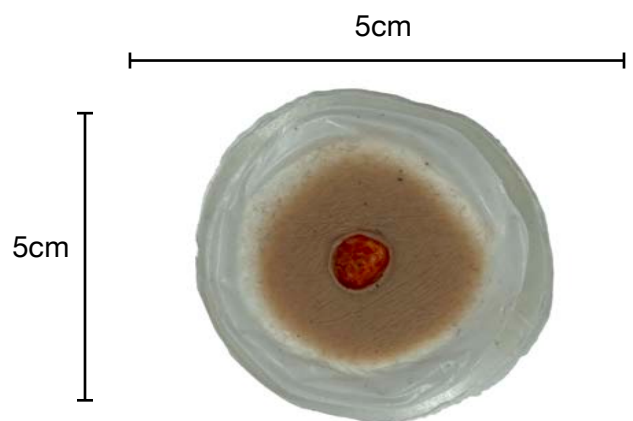
# Gun shot wounds



Wound SMGSW1:  
Raised exit wound  
RRP: £35.00



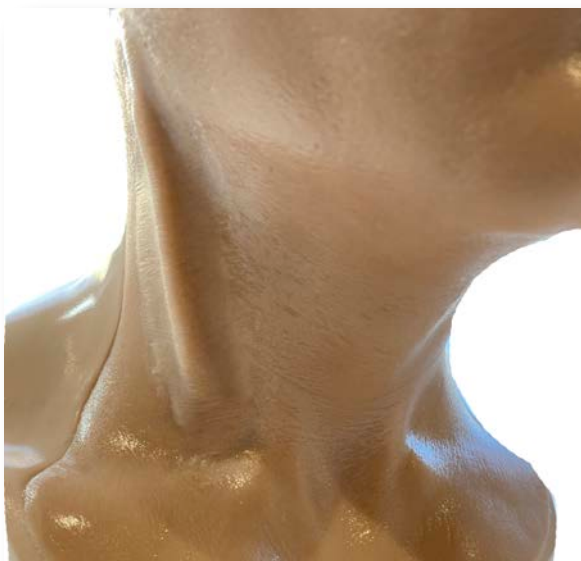
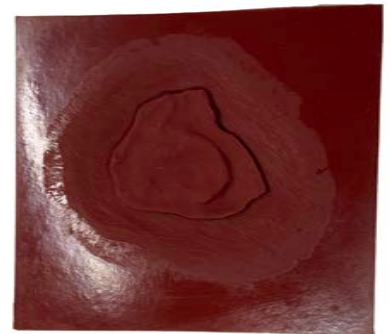
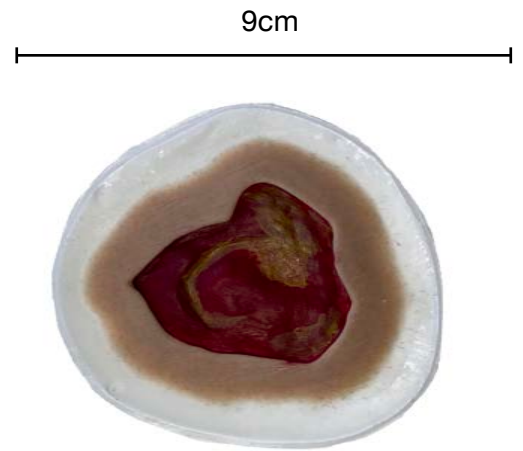
Wound SMGSW2:  
9mm clean entry wound  
RRP: £35.00



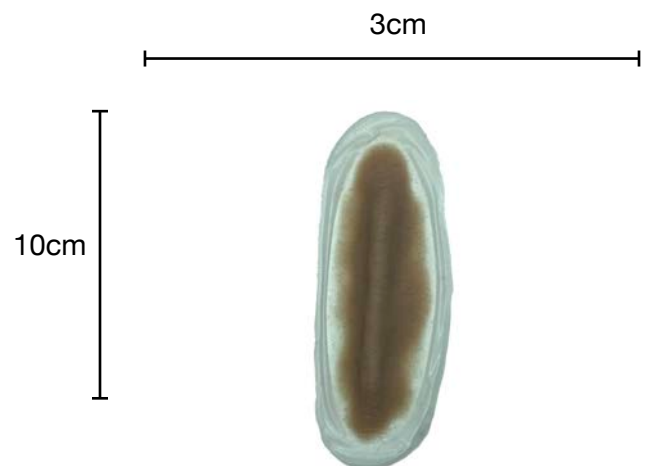
# Medical Wounds

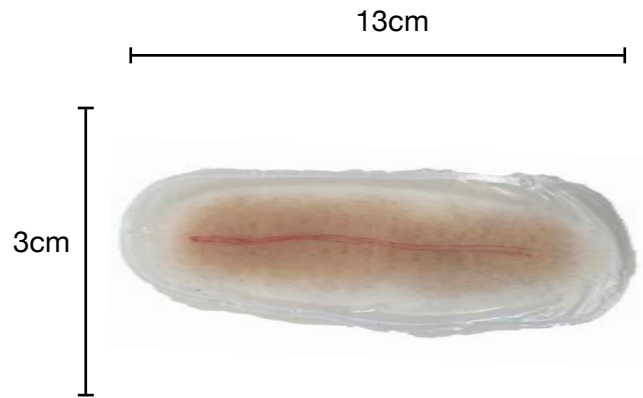
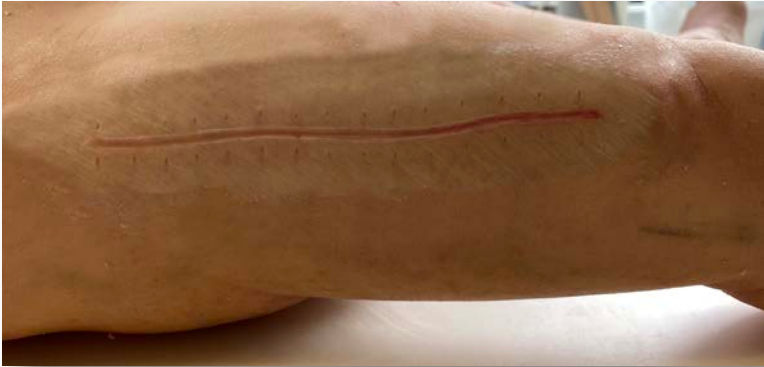


Wound SMMED1:  
3 inch Pressure Sore  
RRP: £35.00

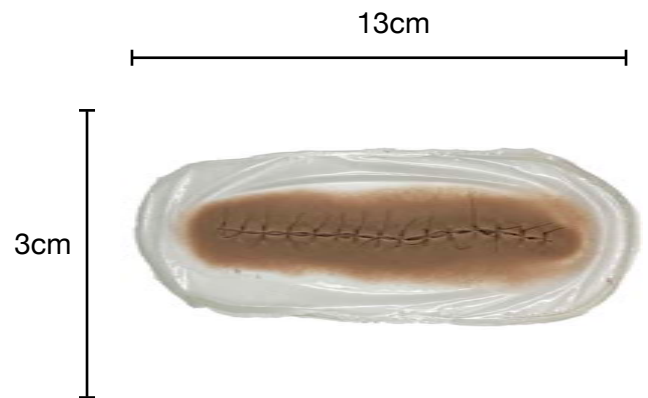


Wound SMMED2:  
Raised JVP unilateral  
RRP: £35.00





Wound SMMED3:  
Post Operation Healed Scar  
RRP: £35.00

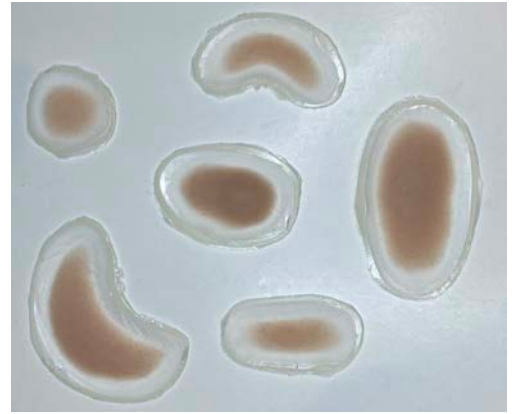


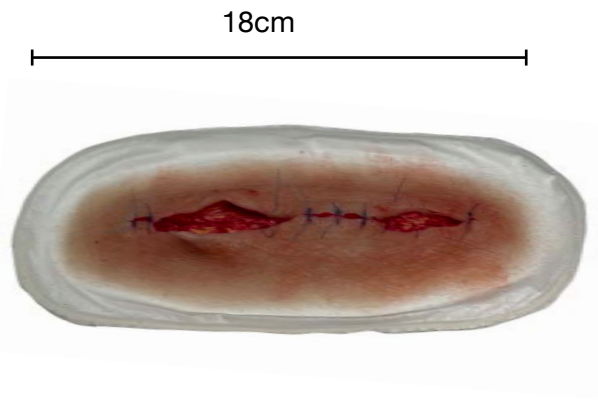
Wound SMMED4:  
Operation Sutured / stapled wound  
With skin texture (human application)  
Without skin texture (manikin application)

RRP: £35.00

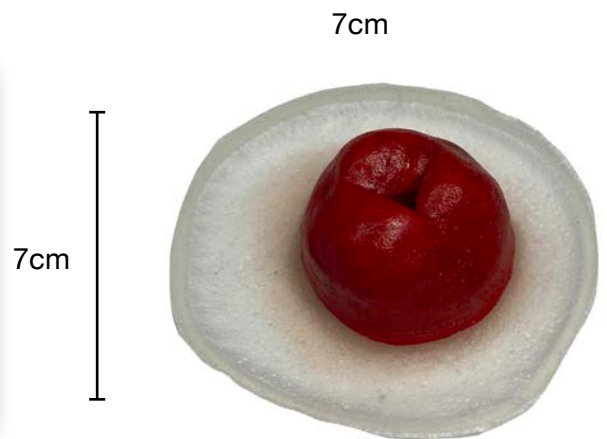


Wound SMMED5:  
6 generic Swellings  
Small Closed Fractures, Blisters,  
Joint & Tissue Swellings  
RRP: £40.00





Wound SMMED6:  
Post Operation Burst Wound  
RRP: £50.00



Wound SMMED7:  
Stoma

RRP: £35.00





Wound SMMED8:

Diabetic Ulceration

3 wounds supplied as a set designed to be a progression of each other covering stage 2 to 4 of ulceration

RRP: £50.00



Stage 2



Stage 3

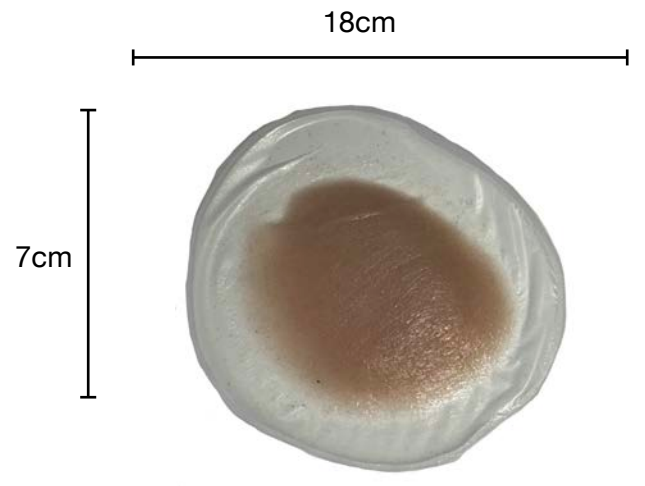


Stage 4





Wound SMMED9:  
Implanted Pacemaker  
RRP: £35.00



## Fake Impaled Metal Bar

Soft, flexible, quality set of 4 fake metal bars that looks exactly like the real thing but can be placed safely in any wound to create stunning effects.



Contents:

- ◆ 2 textured rebar
- ◆ 2 rusty metal rods

\*images for illustration purposes

£20.00

## Silicone Safe Fake Glass

Soft, flexible quality silicone glass that looks exactly like broken glass but can be placed safely in any wound to create stunning effects.



Contents:

- ◆ 50g Bag of Reusable Silicone Glass

\*images for illustration purposes

£ 15.00

# Safe Fake Knife set

Soft fake handle, accurately coloured akin to a film prop. Supplied with a fake blade and also an impaled blade to be used with any appropriate simwound.



Contents:

- ◆ Painted handle
- ◆ Painted full safe blade
- ◆ Painted impaled blade

\*images for illustration purposes

£20.00



Here combined with SMBL9 to create a perfect Stabbed effect.

# Amputated Finger set: SW-AF2

Soft, flexible quality set of 2 fake amputated fingers that look exactly like the real thing to create stunning effects.



\*images for illustration purposes

Contents :

- ◆ 1 long finger
- ◆ 1 finger tip

£20.00



# Silicone Re-usable Blood Pools

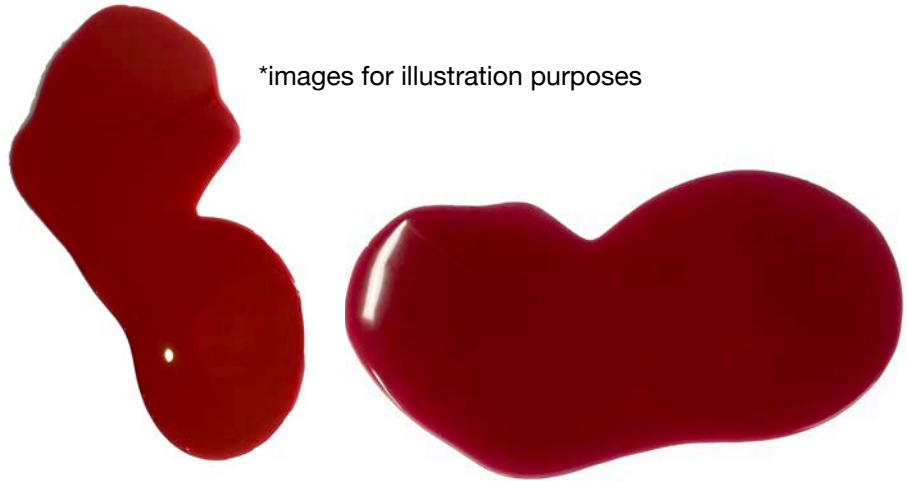
Soft, flexible quality silicone blood pool that looks exactly like the real thing but can be placed safely on any surface to create stunning effects, and simply peeled off when finished, stored and re-used.

Small ( 20cmx10cm approx) and Large ( 30cm x 15cm approx).



- ◆ Reusable Blood Pool Small  
£ 15.00
- ◆ Reusable Blood Pool Large  
£ 25.00

\*images for illustration purposes



# Silicone Re-usable Fake Vomit

Soft, flexible quality silicone vomit that looks exactly like the real thing but can be placed safely on any surface to create stunning effects, and simply peeled off when finished, stored and re-used. Variety of shades available.

Small ( 20cmx10cm approx) and Large ( 30cm x 15cm approx).



- ◆ Reusable Silicone Vomit Small  
£ 15.00
- ◆ Reusable Silicone Vomit Large  
£ 25.00

\*images for illustration purposes

## Silicone Re-usable Suture Pad

Soft, flexible quality silicone suture pad comprising 3 mesh reinforced layers of muscle, fat and skin. Can be re-sutured multiple occasions. Perfect tool for suture practice. Left blank for you to create the wounds you need to suture.

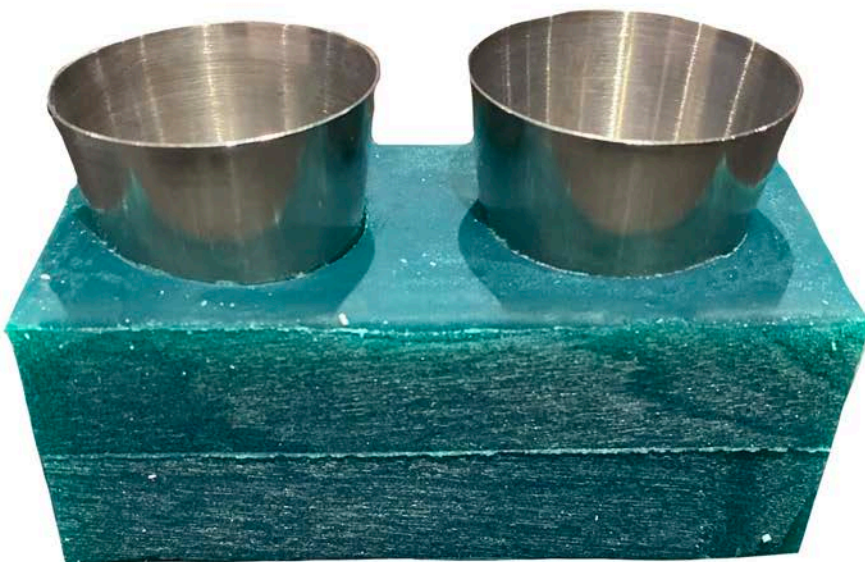


◆ Reusable Suture Pad  
£ 25.00



## Glue and Alcohol Pot Stand

Silicone cast dual shot glass holder supplied with re-usable stainless still shot glasses for safe non-spill usage of any fluids.



£15.00

**PLEASE NOTE:  
ALL PRICES EXCLUDE VAT AND CARRIAGE**